

*ASBC is an all Volunteer
Charitable Non-Profit Providing:*

Information

- Monthly Newsletter and eNews
- Annual Conference
- Website
- Information & Resource Referral
- On-line Resource Directory

Support

- Support Group
- Lecture Series
- Respite Grant Fund
- Fundraising & Events
- Public Library Autism Collection

Awareness

- Legislative Alerts & News
- Autism Faces & Voices
- Awareness Programs
- “Through My Eyes” Art Show ASD Artists

ASBC is a charitable 501(c)(3) non-profit organization relying on donations and volunteers to sustain our efforts. ASBC has no hired staff and charges no local dues.



P.O. Box 270300
Louisville, CO 80027-5004

Phone: 720.272.8231
Fax: 866.826.3995

info.autismboulder@gmail.com

www.autismboulder.org

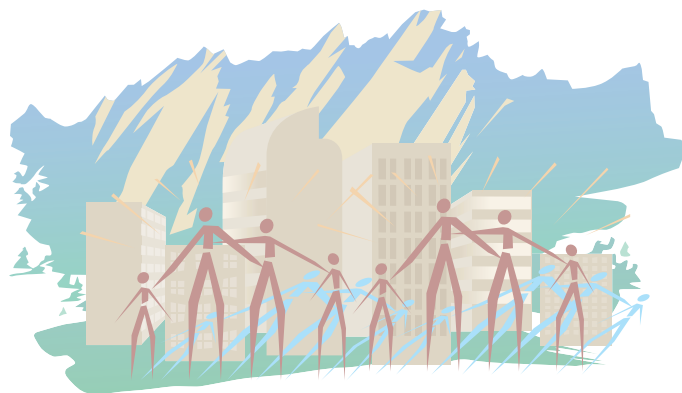


WHO AM I ?

– by Cameron, with Autism Spectrum Disorder

**AUTISM SOCIETY
OF BOULDER COUNTY**

An Autism Society of America Chapter



Promoting Education & Awareness

A Charitable Non-Profit Organization

Imagine...

being unable to *COMMUNICATE*

feeling *DISTRACTED*

FRUSTRATED

OBSESSED

FRIGHTENED... but you don't know why

Imagine...

feeling this way *EVERY DAY*

and struggling with *Autism Spectrum Disorder*



Imagine...

Hope and Possibilities

SUPPORT IS HERE...

Autism Society of Boulder County

Our Mission

To raise autism awareness in Boulder and Broomfield Counties by supporting all Autism Spectrum Disorder (ASD) individuals and their families and professionals. We provide information on all topics related to autism, educational support, autism research and legislation.

What is Autism Spectrum Disorder (ASD)?

ASD is a complex developmental disability that affects an individual's ability to:

- Reason
- Communicate
- Form Relationships

It is a neurological disorder that ranges from mild to severe and is often found in combination with other disabilities.

How Common is ASD?

ASD is more common than childhood cancer, cystic fibrosis and multiple sclerosis combined and affects 1 in 150 individuals today.

Now the fastest-growing developmental disability, annual growth ranges from 10%-17% and will cost an estimated \$200-\$400 billion to the U.S. economy by 2010.

Is There a Cure?

Not Yet!

Early biomedical and behavioral interventions are highly effective.

Affecting individuals in every corner of the world, ASD knows no ethnic or economic boundaries.

